



License No. 800025015
 FL License # CMTL-0003
 CLIA No. 10D1094068

Certificate of Analysis

Compliance Test

Laurelcrest Labs
 2800 Pringle Rd. SE
 Salem, OR 97302

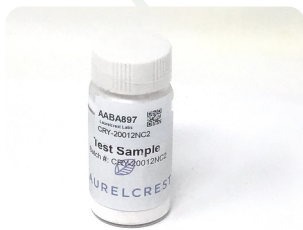
Batch # CRY-20012NC2
 Batch Date: 2021-03-01
 Extracted From: Hemp

Test Reg State: Florida

Order # LAU210301-030002
 Order Date: 2021-03-01
 Sample # AABA897

Sampling Date: 2021-03-02
 Lab Batch Date: 2021-03-02
 Completion Date: 2021-03-08

Initial Gross Weight: 22.410 g



Potency
 Tested

Residual
 Solvents
 Passed

Product Image



Potency - 20

Specimen Weight: 56.040 mg

Analyte	Dilution (1:n)	LOD (%)	LOQ (%)	Result (mg/g)	(%)
CBN	10.000	0.000014	0.001	990.581	99.058
Delta-8 THC	10.000	0.0002	0.001	6.254	0.625
CBGA	10.000	0.00008	0.001	2.397	0.240
CBC	10.000	0.000018	0.001	0.768	0.077
THCV	10.000	0.000007	0.001		<LOQ
CBD	10.000	0.000054	0.001		<LOQ
CBDA	10.000	0.00001	0.001		<LOQ
THCVA	10.000	0.000047	0.001		<LOQ
CBDVA	10.000	0.000014	0.001		<LOQ
THCA-A	10.000	0.000032	0.001		<LOQ
CBG	10.000	0.000248	0.001		<LOQ
Delta-9 THC	10.000	0.000013	0.001		<LOQ
CBCA	10.000	0.000107	0.001		<LOQ
Delta-8 THC	10.000	0.000026	0.001		<LOQ
Delta-10 THC	10.000	0.000003	0.001		<LOQ
CBT	10.000	0.0002	0.001		<LOQ
CBNA	10.000	0.000095	0.001		<LOQ
CBDV	10.000	0.000065	0.001		<LOQ
CBL	10.000	0.000035	0.001		<LOQ
Exo-THC	10.000	0.0002	0.001		<LOQ

Tested (HPLC)



Potency Summary

Total THC None Detected	Total CBD None Detected
Total CBG 0.210%	Total CBN 99.058%
Other Cannabinoids 0.702%	Total Cannabinoids 99.971%

XueLi Gao
 XueLi Gao Lab Toxicologist
 Ph.D., DABT

Aixia Sun
 Aixia Sun Lab Director/Principal Scientist
 D.H.Sc., M.Sc., B.Sc., MT (AAB)



Definitions and Abbreviations used in this report: *Total CBD = CBD + (CBD-A * 0.877), *Total THC = THCA-A * 0.877 + Delta 9 THC, *CBG Total = (CBGA * 0.877) + CBG, *CBN Total = (CBNA * 0.877) + CBN, *Other Cannabinoids Total = CBC + CBDV + THCV + THCVA, *Total Detected Cannabinoids = CBD Total + CBG Total + CBN Total + THC Total + CBC + CBDV + THCV + THCVA, *Analyte Details above show the Dry Weight Concentrations unless specified as 12% moisture concentration. (mg/ml) = Milligrams per Milliliter, LOQ = Limit of Quantitation, LOD = Limit of Detection, Dilution = Dilution Factor (ppb) = Parts per Billion, (%) = Percent, (cfu/g) = Colony Forming Unit per Gram (cfu/g) = Colony Forming Unit per Gram, LOD = Limit of Detection, (µg/g) = Microgram per Gram (ppm) = Parts per Million, (ppm) = (µg/g), (aw) = aw (area ratio) = Area Ratio, (mg/Kg) = Milligram per Kilogram, *Measurement of Uncertainty = +/- 5%



This report shall not be reproduced, without written approval, from ACS Laboratory. The results of this report relate only to the material or product analyzed. Test results are confidential unless explicitly waived otherwise. Accredited by a third-party accrediting body as a competent testing laboratory pursuant to ISO/IEC 17025 of the International Organization for Standardization.



License No. 800025015
 FL License # CMTL-0003
 CLIA No. 10D1094068

Certificate of Analysis

Compliance Test

Laurelcrest Labs
 2800 Pringle Rd. SE
 Salem, OR 97302

Batch # CRY-20012NC2
 Batch Date: 2021-03-01
 Extracted From: Hemp

Test Reg State: Florida

Order # LAU210301-030002
 Order Date: 2021-03-01
 Sample # AABA897

Sampling Date: 2021-03-02
 Lab Batch Date: 2021-03-02
 Completion Date: 2021-03-08

Initial Gross Weight: 22.410 g

Residual Solvents - FL (CBD) **Passed**
(GCMS)

Specimen Weight: 10.000 mg

Dilution Factor: 1.000

Analyte	LOQ (ppm)	Action Level (ppm)	Result (ppm)	Analyte	LOQ (ppm)	Action Level (ppm)	Result (ppm)
1,1-Dichloroethane	0.16	8	ND	1,2-Dichloroethane	0.04	5	ND
Acetone	2.08	5000	ND	Acetonitrile	1.17	410	ND
Benzene	0.02	2	ND	Butanes	2.5	2000	ND
Chloroform	0.04	60	ND	Ethanol	2.78	5000	ND
Ethyl Acetate	1.11	5000	ND	Ethyl Ether	1.39	5000	ND
Ethylene Oxide	0.1	5	ND	Heptane	1.39	5000	ND
Hexane	1.17	290	131.182	Isopropyl alcohol	1.39	500	ND
Methanol	0.69	3000	ND	Methylene chloride	2.43	600	ND
Pentane	2.08	5000	123.677	Propane	5.83	2100	ND
Toluene	2.92	890	ND	Total Xylenes	2.92	2170	ND
Trichloroethylene	0.49	80	ND				

Xueli Gao Lab Toxicologist
 Ph.D., DABT

Aixia Sun Lab Director/Principal Scientist
 D.H.Sc., M.Sc., B.Sc., MT (AAB)



Definitions and Abbreviations used in this report: *Total CBD = CBD + (CBD-A * 0.877), *Total THC = THCA-A * 0.877 + Delta 9 THC, *CBG Total = (CBGA * 0.877) + CBG, *CBN Total = (CBNA * 0.877) + CBN, *Other Cannabinoids Total = CBC + CBDV + THCV + THCV-A, *Total Detected Cannabinoids = CBD Total + CBG Total + CBN Total + THC Total + CBC + CBDV + THCV + THCV-A, *Analyte Details above show the Dry Weight Concentrations unless specified as 12% moisture concentration. (mg/ml) = Milligrams per Milliliter, LOQ = Limit of Quantitation, LOD = Limit of Detection, Dilution = Dilution Factor (ppb) = Parts per Billion, (%) = Percent, (cfu/g) = Colony Forming Unit per Gram (cfu/g) = Colony Forming Unit per Gram, , LOD = Limit of Detection, (µg/g) = Microgram per Gram (ppm) = Parts per Million, (ppm) = (µg/g), (aw) = aw (area ratio) = Area Ratio, (mg/Kg) = Milligram per Kilogram, *Measurement of Uncertainty = +/- 5%



This report shall not be reproduced, without written approval, from ACS Laboratory. The results of this report relate only to the material or product analyzed. Test results are confidential unless explicitly waived otherwise. Accredited by a third-party accrediting body as a competent testing laboratory pursuant to ISO/IEC 17025 of the International Organization for Standardization.